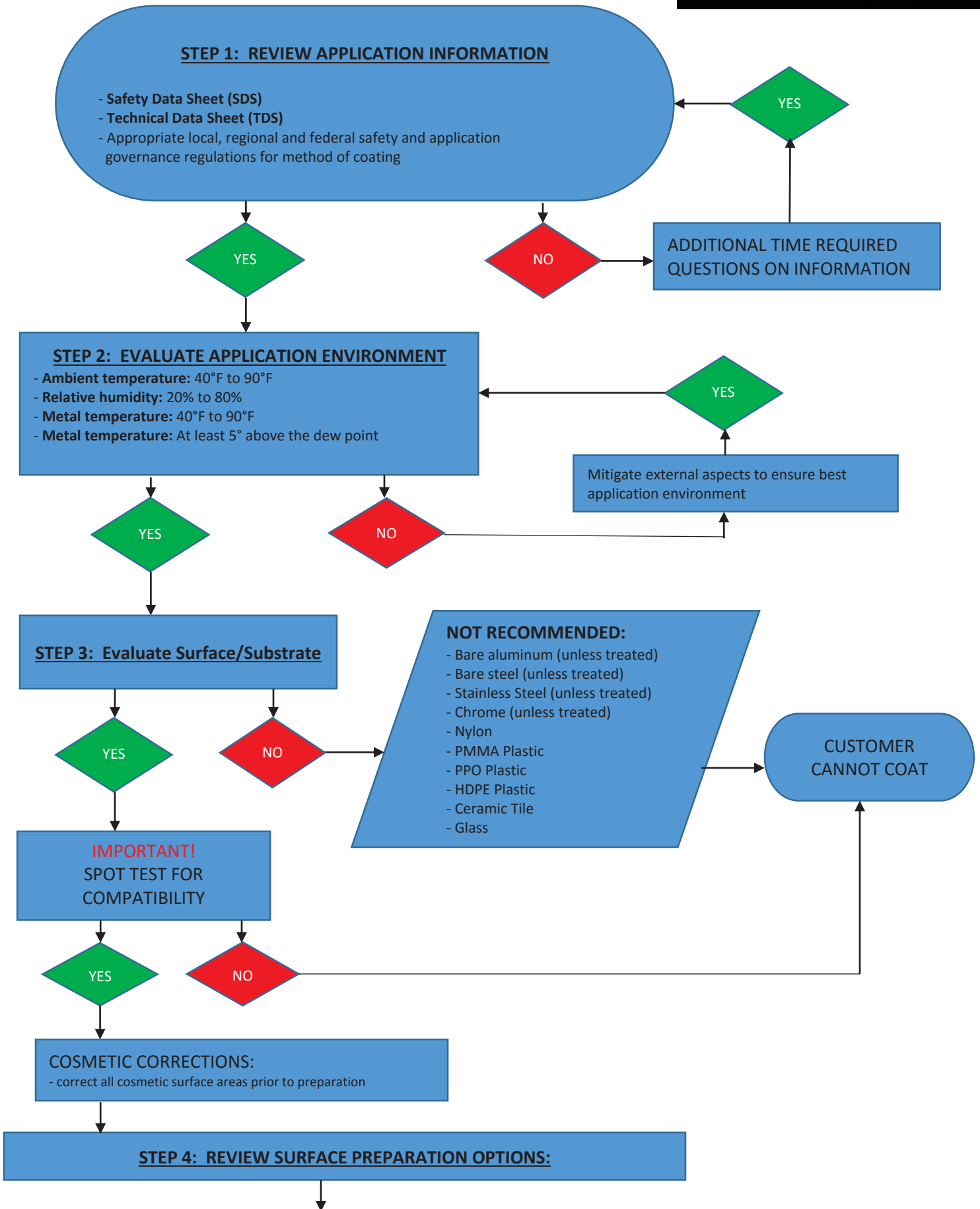
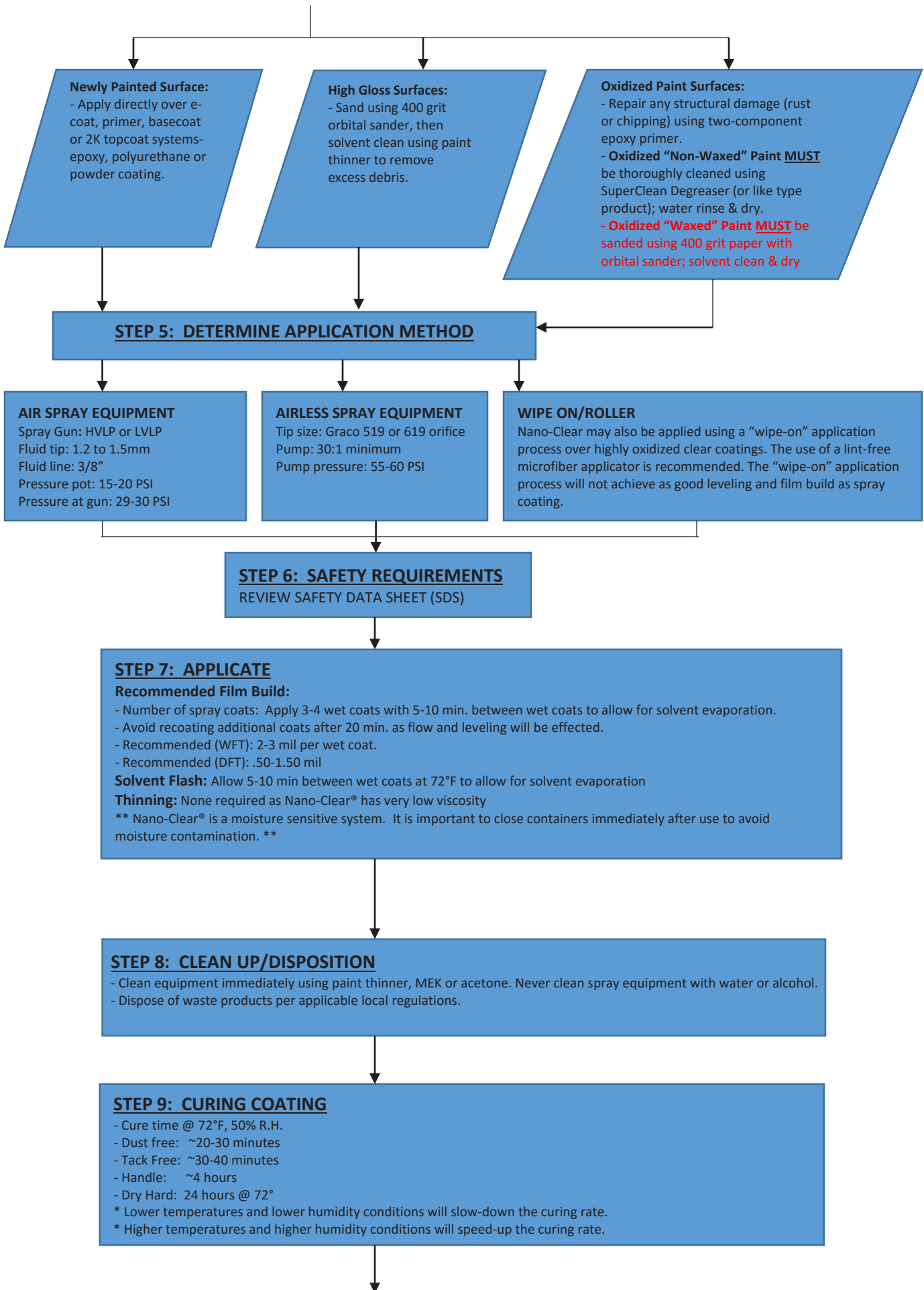


# NANO-CLEAR® APPLICATION INSTRUCTIONS





↓

**STEP 10: APPLIED PRODUCT REVIEW**  
REQUIRES CORRECTIONS?

YES

NO

**BUFFING & POLISHING (if needed):**

- **Equipment:** orbital sander and orbital polishing equipment.
- **Sandpaper:** 1000 grit paper, then 1500, then 2000 to 2500 grit paper.
- **Compound:** Heavy cut compound with wool pad @ 1200 to 1400 RPM.
- **Polishing:** 3M SRC (scratch resistant clears) polishing paste with wool @ 1200 to 1400 RPM.
- **Final Polish:** use light to medium cut polishing paste with wool pad @ 1200 to 1400 RPM.

**COATING MAINTENANCE:**  
SURFACE MAINTENANCE/CLEANING

- use low pH soap and water for clean-up.
- use lint-free microfiber cloths to clean and dry surface
- use paint-thinner to remove graffiti.

